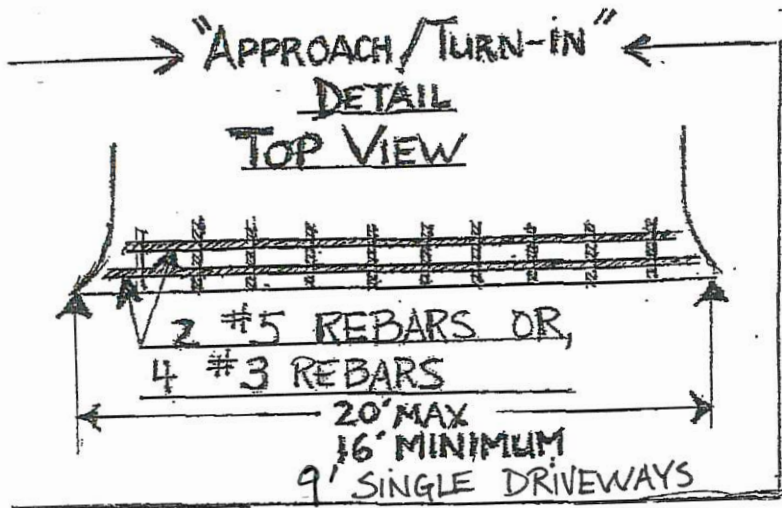


RESIDENTIAL DRIVEWAY

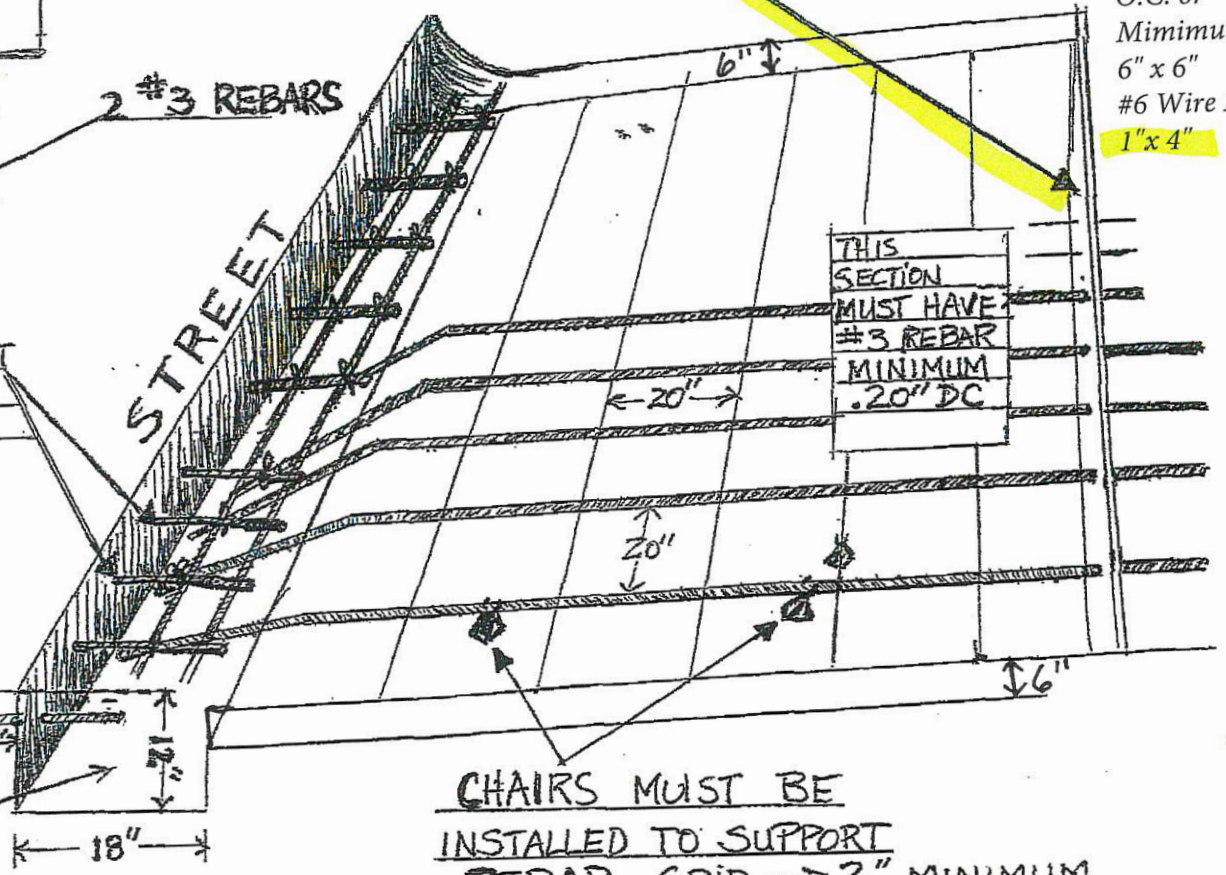
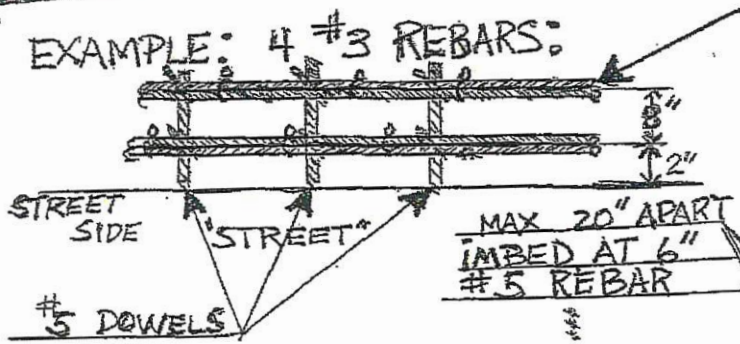


Expansion joints required for areas over 200 sq. ft.

1"x6" EXPANSION JOINT AT THE PROPERTY LINE

- Owner's Driveway
- #3 rebar
- Max. 20" O.C. or
- Minimum 6" x 6" #6 Wire Mesh
- 1"x4"

BEAM DETAIL



THIS SECTION MUST HAVE #3 REBAR MINIMUM .20" DC

CHAIRS MUST BE INSTALLED TO SUPPORT REBAR GRID → 2" MINIMUM FROM BASE. (NO BRICK, OR CONCRETE BLOCKS PERMITTED)

BEAM

→ (SEE "APPROACH/TURN-IN" DETAIL)

→ AND... "BEAM DETAIL"